



McDonald's
Malta International Airport, Luqa

Social Story of McDonald's MIA
for visitors on the Autism Spectrum



ENTRANCE

This McDonald's is found at Malta International Airport, Gudja. This is the entrance to the McDonald's restaurant.

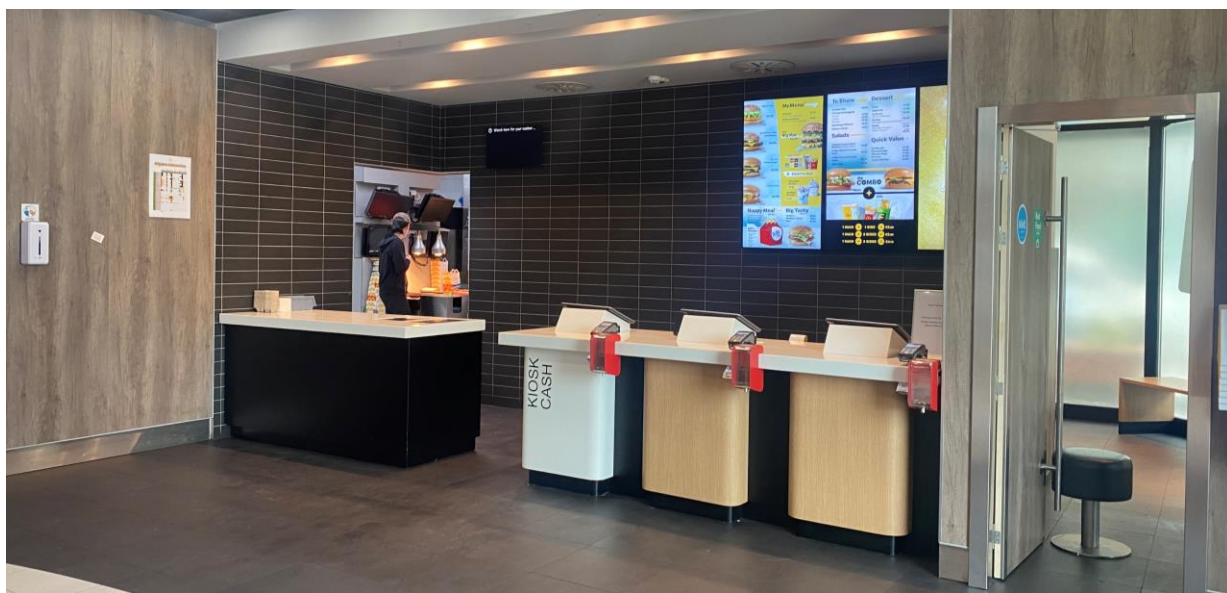


Once you enter the restaurant, you will be in the main lobby area.



FRONT COUNTER

On the right-hand side of the entrance, you will find our front counter. At the front counter you can ask for our Autism Ambassadors, order your food, pick-up the food and ask for general assistance.



You can order here



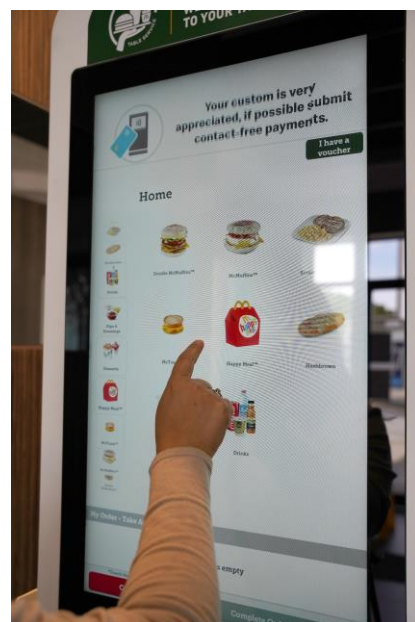
Pick up your food here

SELF-ORDERING KIOSK

In the main lobby area, you will find various self-ordering kiosks.



This is a Self-Ordering Kiosk.



You can use the Self-Ordering Kiosk to order your food.

TABLE SERVICE



You can choose Table Service to have your order delivered to your table. Table service can be chosen from the Front counter or from the Self-Ordering kiosk.

Simply take the table tent show in this picture with the number 3, to the table and our colleagues will bring your order to your table.

The table tent could be any number.

MAIN LOBBY AREA



On the left-hand side of the main lobby area, there is more seating space and along this corridor you may find the toilets and the Quiet Space.



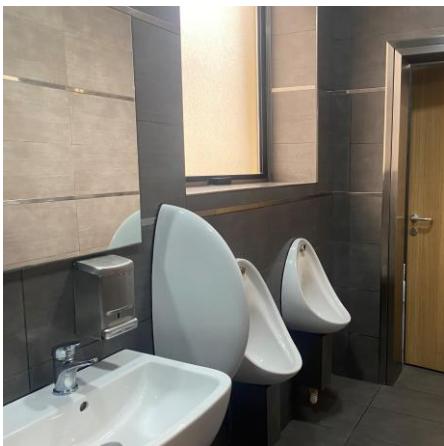
TOILETS



The entrance to the toilets is the second door on the left of this corridor.



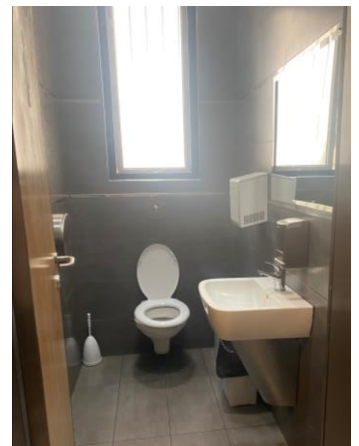
Through the entrance of the toilets, you will find 4 doors. One is the men's toilet; one is the toilet for persons with disability and two toilets are for women.



Men's Toilet



Toilet for persons with disability



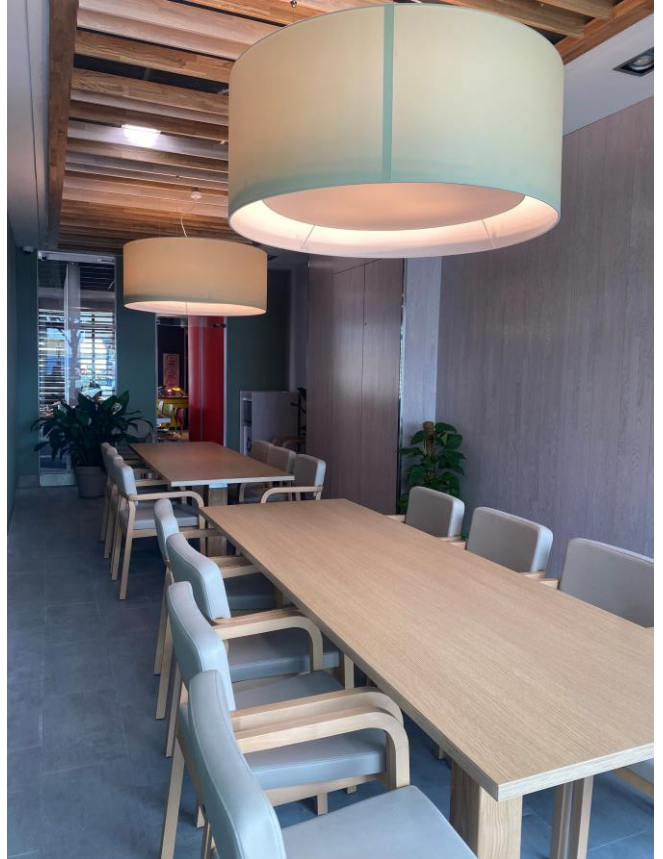
Women's Toilet

QUIET SPACE

The second door along the corridor is the Quiet Space. This is the entrance to the Quiet Space.



This is what the Quiet Space looks like. There are 2 tables and several chairs where you can sit and enjoy your McDonald's.



Ask our Autism Ambassadors, for anything you might need including sensory toys and noise cancelling headphones.

McCafé



Opposite the Quiet Space you will see a McCafé this is where you can buy teas, smoothies, coffees and cakes.

Autism Friendly Hours

Mondays and Thursdays between 15:00 and 16:30, at McDonald's MIA we have Autism Friendly Hours, during which the entire restaurant will have dimmer lights and lower noise levels.

Thank you!

Thank you for visiting our restaurant. We hope you enjoy your experience here.